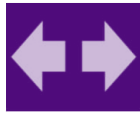
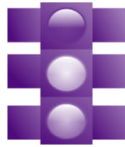


## REASONS FOR STOP:

EXPIRED



Blinker/  
Directional



## DOCUMENTS



Driver's License/  
Photo ID



Registration/ Insurance  
or Inspection

YOU ARE BEING: WARNED TICKETED ARRESTED

# HELP



Car Trouble



## Call an Interpreter

[www.bridgesfordeafandhh.org](http://www.bridgesfordeafandhh.org)

Middle Tennessee  
(615) 248-8828 Voice  
(615) 244-0979 24-Hour  
Emergency Line  
Health)

Shelby and  
Surrounding  
Counties  
901.701.6800  
(voice and 24-  
hour line)

# I am Deaf or Hard of Hearing

Failure to cooperate with verbal  
commands means I am NOT hearing or  
understanding you.

## Best Way to Communicate with Me



Interpreter



Text



Writing



Lip Reading



Gesturing

## Quick Communication Tips

- Please make sure you have my attention before speaking.
- Please be sure I can see your face and mouth clearly. Please consider moving to a lighted area.
- Don't shine any light directly in my eyes.
- I need to see your face and hands to "hear" you.
- Maintain eye contact.
- Speak slowly and clearly.
- A hearing aid or cochlear implant does not allow me to understand everything said.

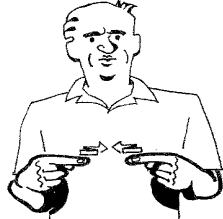
# Americans with Disabilities Act

**In the event of a medical emergency or police proceedings, I am entitled by the Americans with Disabilities Act to have a qualified sign language interpreter provided.**

**(ADA, Section 504, Rehabilitation Act, Title II of ADA).**



**Ambulance**



**Hurt**



**help**



**Deaf**



**Name**



**Yes**



**License**



**Insurance**



**Police**



**Ticket**



**Arrest**



**No**



**Please**



**Thank You**



**a**



**b**



**c**



**d**



**e**



**f**



**g**

palm forward  
thumb bent out

thumb also often  
lower (like a claw)

*palm is always forward  
except where noted*



**h**

palm in



**i**



**j**



**k**



**l**



**m**



**0 1 2 3 4 5 6 7 8 9**



**n**



**o**

palm faces opposite  
side of body



**p**

index finger  
points out



**q**

like p but points  
down and unseen  
fingers curled in



**r**



**s**



**t**



**u**



**v**



**w**



**x**



**y**



**z**

palm forward  
thumb can be over fingers  
whole palm can be  
slanted to side away from body



**BRIDGES**  
FOR THE DEAF AND HARD OF HEARING



**BRIDGES**  
FOR THE DEAF AND HARD OF HEARING  
**WEST**